

! Due to the printing process, the colors of the actual products may differ from the pictures. For the actual effect please refer to tile samples.

**M-RAINBOW<sup>®</sup>**



## **MORNING RAINBOW LIGHTING**

**AN ISO9001-2015**

CERTIFIED MANUFACTURER  
2024 Hotel and Residential Lighting



**HONGKONG MORNING STAR LIGHTING INT CO., LTD.**  
**FOSHAN CHENHONG LIGHTING ELECTRICAL APPLIANCE CO., LTD.**

F3, Bldg.#3, Jiangmei Industrial Zoon Xiaotang, Shishan Town, Nanhai, Foshan City, China

Tel: +86-757-86636899 81081766

Fax: +86-757-86633577

Homepage: [www.cn-starlighting.com](http://www.cn-starlighting.com)

Email: [info@cn-starlighting.com](mailto:info@cn-starlighting.com)



## COMPANY PROFILE

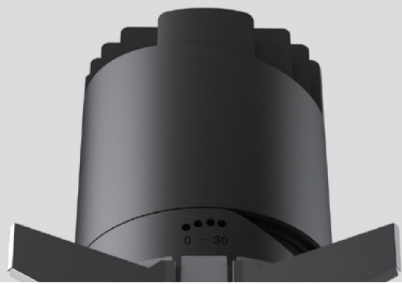
---

Foshan Chenghong lighting is a professional manufacturer of led commercial lighting products. The company was founded in year 2009. We focus on led downlight, led track light, led ceiling spotlight, led panel lights and all types of led lighting fixtures. etc , All products are CCC, CQC , CE, RoHs certified.

We response very fast for custom design, can make 3D drawing in 2days per customers' idea, can make mock- up samples in 3days. MR product can bring amazing value for different applications, like retails shops, showrooms, supermarket , hotels , villas etc. Morning rainbow is fully certified with ISO9001- 2015 and CCC . We have very strick quality control from incoming raw materials to finish products. We have complete equipments for temperature testing, photometric testing, aging testing and reliability testing. We can provide IES, Dalux caculations . Morning rainbow ensures each lamp with excellent performace before shipment with 100% inspections.

The company has an area of more than 5000 square meters, 120workers, 2 Auto downlight assembly machines, 10 production lines, 2 auto aging test lines , one EMC test room and one powder coating factory. The monthly capacity for track lights and downlights are 780000pcs. We can ensure fast delivery and reliable quality.

Our mission is pursue perfect lighting and win- win cooperation.



## **Hotel and Residential Lighting**

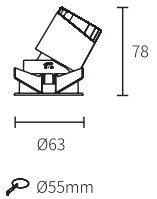
8W



Colour:

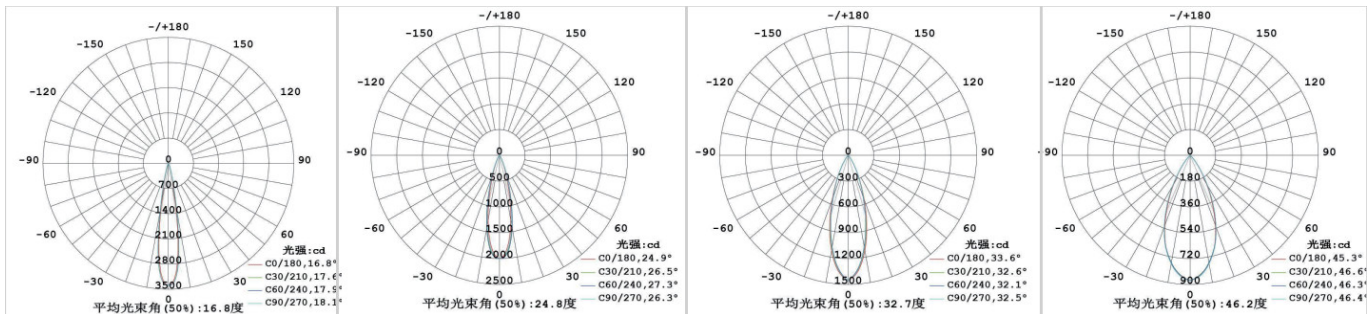


Optional:



型号	Model Code	100301E55	100302E55	100303E55
功率	Power	8W	8W	8W
开孔	Cut out	Φ55mm	Φ55mm	Φ55mm
光源	Light Source	CREE, Bridgelux	CREE, Bridgelux	CREE, Bridgelux
尺寸	Size(DxH)	Φ63x78mm	Φ63x78mm	Φ63x78mm
驱动	Driver	Lifud, Philips, Tridonic	Lifud, Philips, Tridonic	Lifud, Philips, Tridonic
眩光值	UGR	<16	<16	<16
显色指数	CRI	>90, 97	>90, 97	>90, 97
光束角	Beam angle	15° / 24° / 36° / 55°	15° / 24° / 36° / 55°	15° / 24° / 36° / 55°
色温	CCT	2700K/3000K/4000K/5000K/6500K	2700K/3000K/4000K/5000K/6500K	2700K/3000K/4000K/5000K/6500K
光通量	Lumens	520lms	520lms	480lms
寿命	Life time	50000 h	50000 h	50000 h
防护等级	IP	IP20	IP20	IP20

配光参数 Photometric



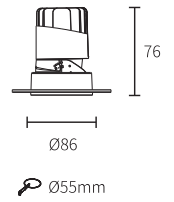
8W



Colour:

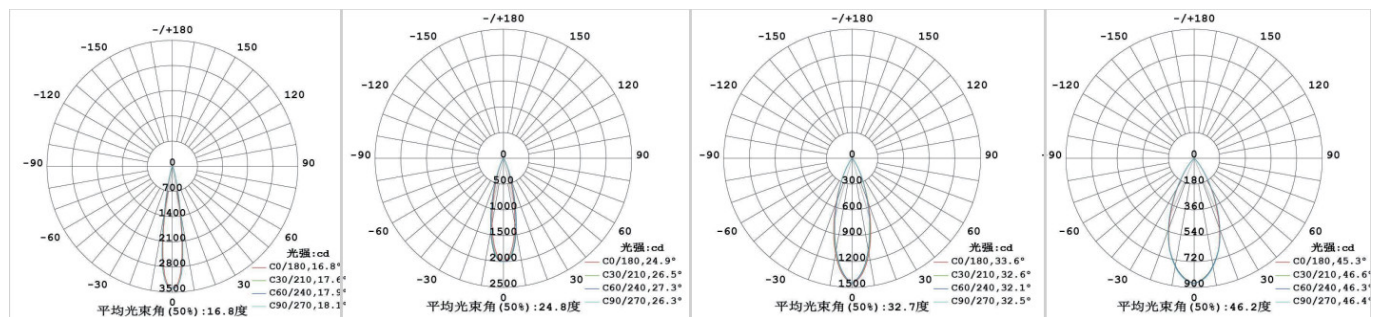


Optional :

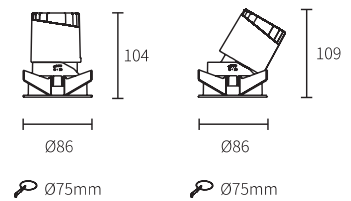
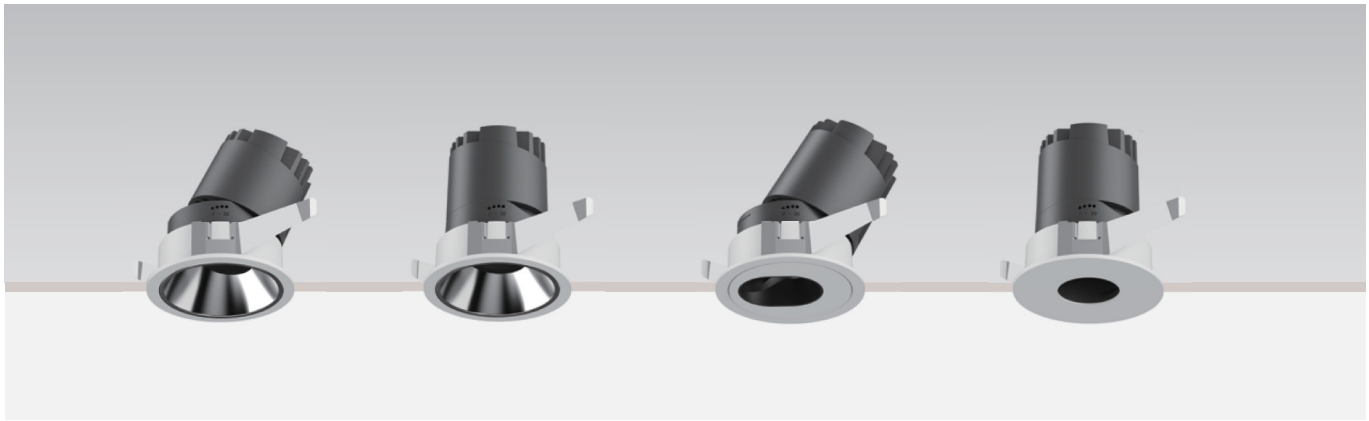


型号	Model Code	100301T55	100302T55	100303T55
功率	Power	8W	8W	8W
开孔	Cut out	Φ55mm	Φ55mm	Φ55mm
光源	Light Source	CREE, Bridgelux	CREE, Bridgelux	CREE, Bridgelux
尺寸	Size(DxH)	Φ86x76mm	Φ86x76mm	Φ86x76mm
驱动	Driver	Lifud, Philips, Tridonic	Lifud, Philips, Tridonic	Lifud, Philips, Tridonic
眩光值	UGR	<16	<16	<16
显色指数	CRI	>90, 97	>90, 97	>90, 97
光束角	Beam angle	15° / 24° / 36° / 55°	15° / 24° / 36° / 55°	15° / 24° / 36° / 55°
色温	CCT	2700K/3000K/4000K/5000K/6500K	2700K/3000K/4000K/5000K/6500K	2700K/3000K/4000K/5000K/6500K
光通量	Lumens	520lms	520lms	480lms
寿命	Life time	50000 h	50000 h	50000 h
防护等级	IP	IP20	IP20	IP20

配光参数 Photometric



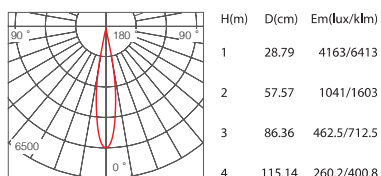
12W



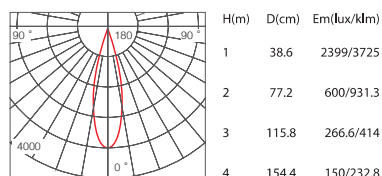
型号	Model Code	1003YF12A	1003YK12A	1003YF12B	1003YK12B
功率	Power	12W	12W	12W	12W
开孔	Cut out	Φ75mm	Φ75mm	Φ75mm	Φ75mm
光源	Light Source	CREE	CREE	CREE	CREE
尺寸	Size(DxH)	Φ86x104mm	Φ86x109mm	Φ86x104mm	Φ86x109mm
驱动	Driver	Lifud/Philips	Lifud/Philips	Lifud/Philips	Lifud/Philips
眩光值	UGR	<16	<16	<16	<16
显色指数	CRI	≥90, 97	≥90, 97	≥90, 97	≥90, 97
光束角	Beam angle	15°/24°/38°/50°	15°/24°/38°/50°	15°/24°/38°	15°/24°/38°
色温	CCT	2700K/3000K/4000K/5000K	2700K/3000K/4000K/5000K	2700K/3000K/4000K/5000K	2700K/3000K/4000K/5000K
光通量	Lumens	722 lm/794 lm/830 lm/881 lm	722 lm/794 lm/830 lm/881 lm	664 lm/731 lm/764 lm/810 lm	664 lm/731 lm/764 lm/810 lm
寿命	Life time	50000 h	50000 h	50000 h	50000 h
防护等级	IP	IP20	IP20	IP20	IP20

配光参数 Photometric

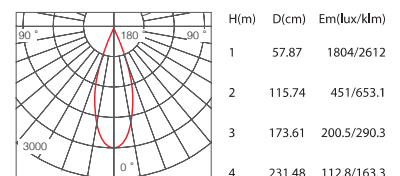
Beam Angle 15° 12W 3000K

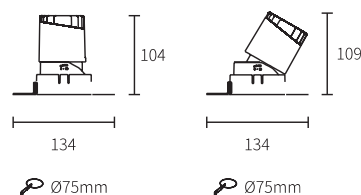


Beam Angle 24° 12W 3000K



Beam Angle 38° 12W 3000K





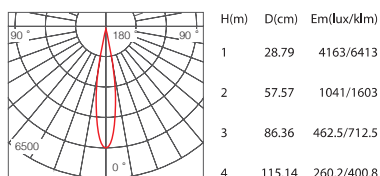
型号	Model Code	1003TF12A	1003TK12A	1003TF12B	1003TK12B
功率	Power	12W	12W	12W	12W
开孔	Cut out	Φ75mm	Φ75mm	Φ75mm	Φ75mm
光源	Light Source	CREE	CREE	CREE	CREE
尺寸	Size(DxH)	134x104mm	134x109mm	134x104mm	134x109mm
驱动	Driver	Lifud/Philips	Lifud/Philips	Lifud/Philips	Lifud/Philips

眩光值	UGR	<16	<16	<16	<16
显色指数	CRI	≥90, 97	≥90, 97	≥90, 97	≥90, 97
光束角	Beam angle	15°/24°/38°/50°	15°/24°/38°/50°	15°/24°/38°	15°/24°/38°

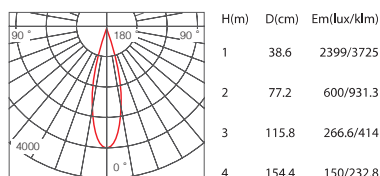
色温	CCT	2700K/3000K/4000K/5000K	2700K/3000K/4000K/5000K	2700K/3000K/4000K/5000K	2700K/3000K/4000K/5000K
光通量	Lumens	722 lm/794 lm/830 lm/881 lm	722 lm/794 lm/830 lm/881 lm	664 lm/731 lm/764 lm/810 lm	664 lm/731 lm/764 lm/810 lm
寿命	Life time	50000 h	50000 h	50000 h	50000 h
防护等级	IP	IP20	IP20	IP20	IP20

配光参数 Photometric

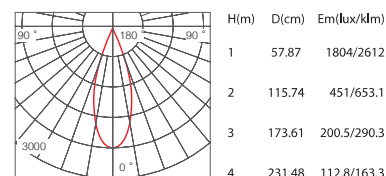
Beam Angle 15° 12W 3000K



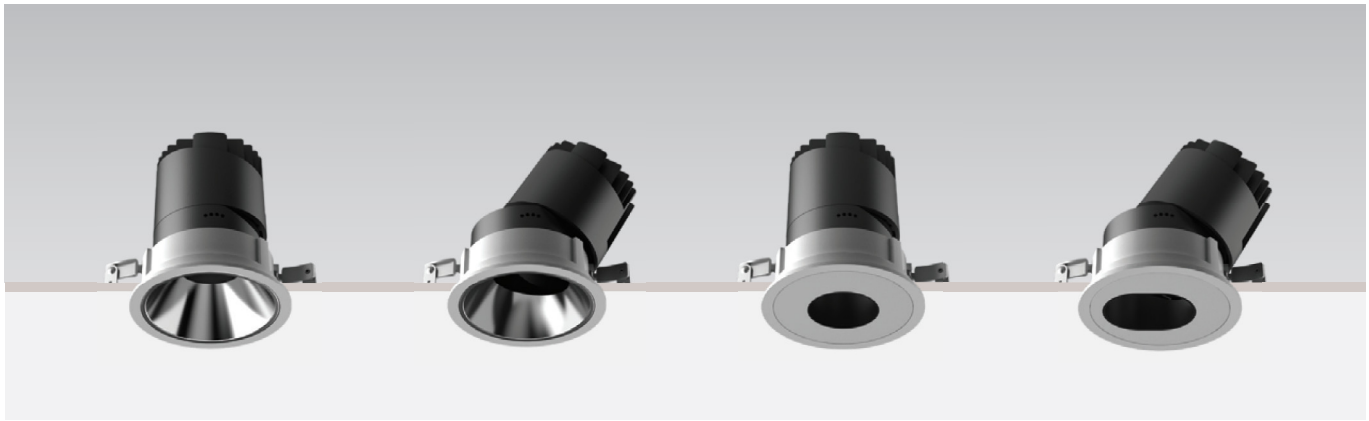
Beam Angle 24° 12W 3000K



Beam Angle 38° 12W 3000K



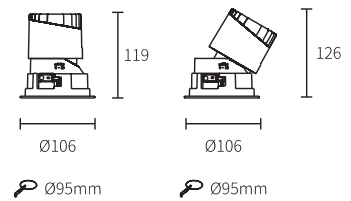
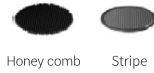
20W



Colour:



Optional :



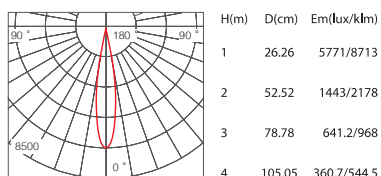
型号	Model Code	1003YF20A	1003YK20A	1003YF20B	1003YK20B
功率	Power	20W	20W	20W	20W
开孔	Cut out	Φ95mm	Φ95mm	Φ95mm	Φ95mm
光源	Light Source	CREE	CREE	CREE	CREE
尺寸	Size(DxH)	Φ106x119mm	Φ106x126mm	Φ106x119mm	Φ106x126mm
驱动	Driver	Lifud/Philips	Lifud/Philips	Lifud/Philips	Lifud/Philips

眩光值	UGR	<16	<16	<16	<16
显色指数	CRI	≥90, 97	≥90, 97	≥90, 97	≥90, 97
光束角	Beam angle	15° /24° /38° /55°	15° /24° /38° /55°	15° /24°	15° /24°

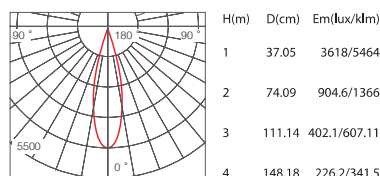
色温	CCT	2700K/3000K/4000K/5000K	2700K/3000K/4000K/5000K	2700K/3000K/4000K/5000K	2700K/3000K/4000K/5000K
光通量	Lumens	1023 lm/1125 lm/1176 lm/1248 lm	1023 lm/1125 lm/1176 lm/1248 lm	941 lm/1035 lm/1082 lm/1148 lm	941 lm/1035 lm/1082 lm/1148 lm
寿命	Life time	50000 h	50000 h	50000 h	50000 h
防护等级	IP	IP20	IP20	IP20	IP20

配光参数 Photometric

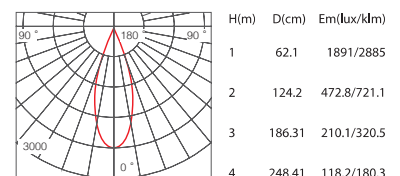
Beam Angle 15° 20W 3000K

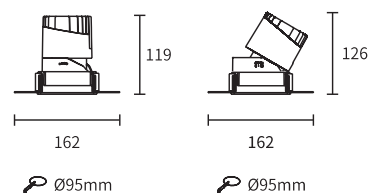
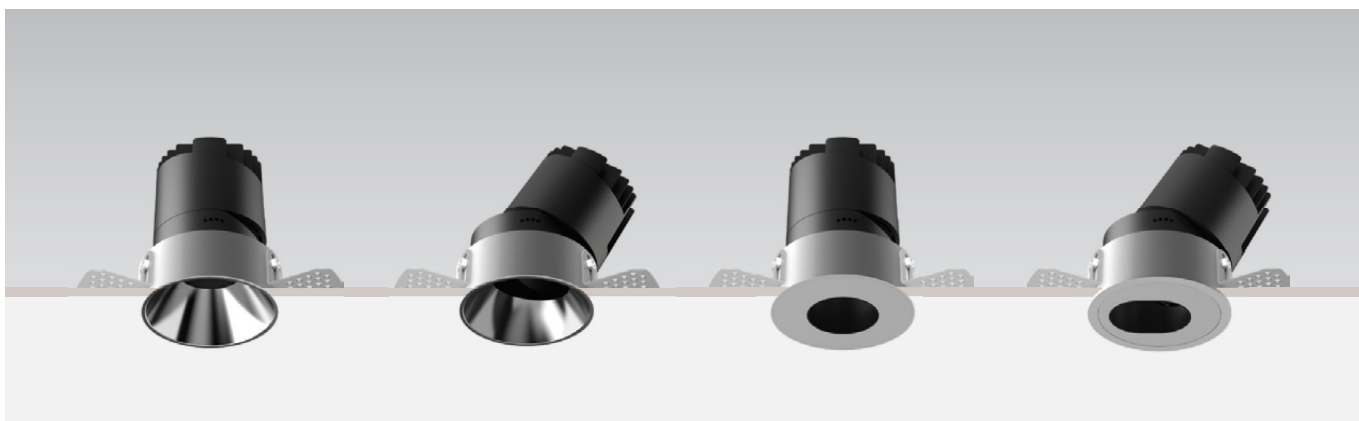


Beam Angle 24° 20W 3000K



Beam Angle 38° 20W 3000K

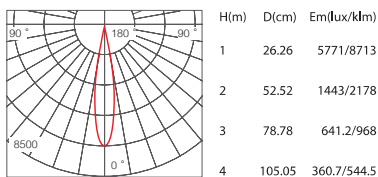




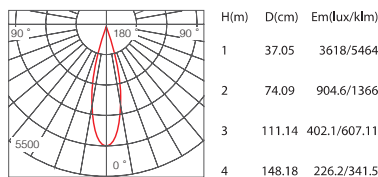
型号	Model Code	1003TF20A	1003TK20A	1003TF20B	1003TK20B
功率	Power	20W	20W	20W	20W
开孔	Cut out	Φ95mm	Φ95mm	Φ95mm	Φ95mm
光源	Light Source	CREE	CREE	CREE	CREE
尺寸	Size(DxH)	162x119mm	162x126mm	162x119mm	162x126mm
驱动	Driver	Lifud/Philips	Lifud/Philips	Lifud/Philips	Lifud/Philips
眩光值	UGR	<16	<16	<16	<16
显色指数	CRI	≥90, 97	≥90, 97	≥90, 97	≥90, 97
光束角	Beam angle	15°/24°/38°/55°	15°/24°/38°/55°	15°/24°	15°/24°
色温	CCT	2700K/3000K/4000K/5000K	2700K/3000K/4000K/5000K	2700K/3000K/4000K/5000K	2700K/3000K/4000K/5000K
光通量	Lumens	1023 lm/1125 lm/1176 lm/1248 lm	1023 lm/1125 lm/1176 lm/1248 lm	941 lm/1035 lm/1082 lm/1148 lm	941 lm/1035 lm/1082 lm/1148 lm
寿命	Life time	50000 h	50000 h	50000 h	50000 h
防护等级	IP	IP20	IP20	IP20	IP20

配光参数 Photometric

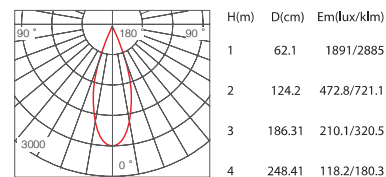
Beam Angle 15° 20W 3000K



Beam Angle 24° 20W 3000K



Beam Angle 38° 20W 3000K

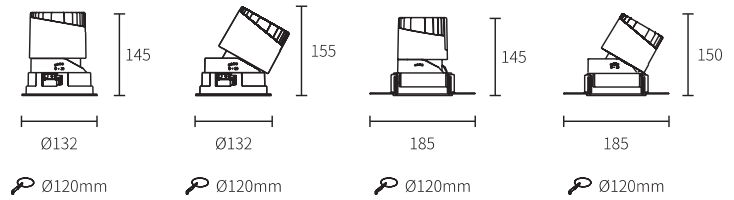


30W



Colour: Sand gold Pearl Black Black White Silver Chrome

Optional: Honey comb Soft Lens Square Stripe



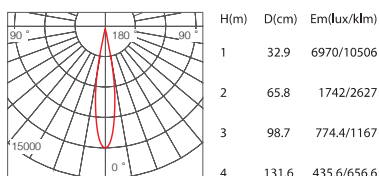
型号	Model Code	1003YF30A	1003YK30A	1003TF30A	1003TK30A
功率	Power	30W	30W	30W	30W
开孔	Cut out	Φ120mm	Φ120mm	Φ120mm	Φ120mm
光源	Light Source	CREE	CREE	CREE	CREE
尺寸	Size(DxH)	Φ132x145mm	Φ132x155mm	185x145mm	185x150mm
驱动	Driver	Lifud/Philips	Lifud/Philips	Lifud/Philips	Lifud/Philips

眩光值	UGR	<16	<16	<16	<16
显色指数	CRI	≥90, 97	≥90, 97	≥90, 97	≥90, 97
光束角	Beam angle	15°/24°/38°/55°	15°/24°/38°/55°	15°/24°/38°/55°	15°/24°/38°/55°

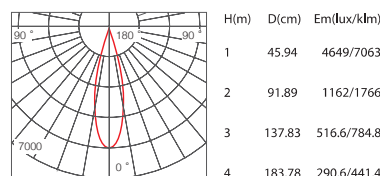
色温	CCT	2700K/3000K/4000K/5000K	2700K/3000K/4000K/5000K	2700K/3000K/4000K/5000K	2700K/3000K/4000K/5000K
光通量	Lumens	1502 lm/1652 lm/1727 lm/1832 lm	1502 lm/1652 lm/1727 lm/1832 lm	1502 lm/1652 lm/1727 lm/1832 lm	1502 lm/1652 lm/1727 lm/1832 lm
寿命	Life time	50000 h	50000 h	50000 h	50000 h
防护等级	IP	IP20	IP20	IP20	IP20

配光参数 Photometric

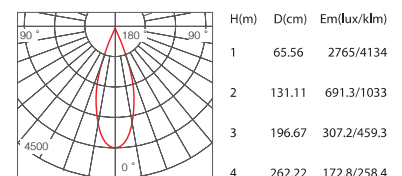
Beam Angle 15° 30W 3000K



Beam Angle 24° 30W 3000K



Beam Angle 38° 30W 3000K

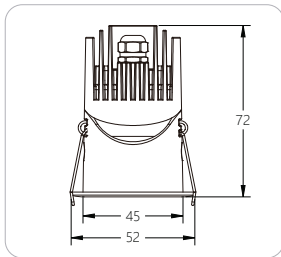




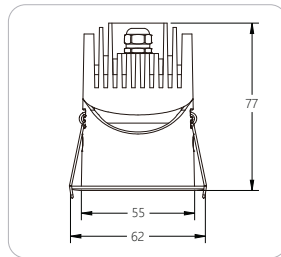
# IP65

Waterproof

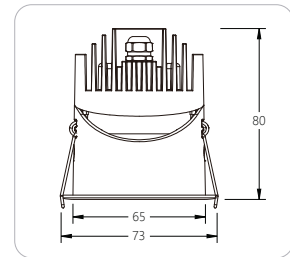
## Dimensions / 尺寸



6W



8W



10W



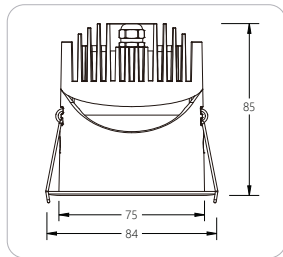
型号	Model Code	1005E45	1005E55	1005E65
功率	Power	6W	8W	10W
开孔	Cut Out	Ø45	Ø55	Ø65
光源	Light Source	CREE, Bridgelux	CREE, Bridgelux	CREE, Bridgelux
尺寸	Size(DxH)	Ø52x72	Ø62x77	Ø73x80
驱动	Driver	Lifud, Tridonic, IP65	Lifud, Tridonic, IP65	Lifud, Tridonic, IP65
眩光值	UGR	<6	<6	<6
显色指数	CRI	>90 97	>90 97	>90 97
光束角	Beam Angle	15°/24°/36°/55°	15°/24°/36°/55°	15°/24°/36°/55°
色温	CCT	2700K/3000K/4000K/5000K	2700K/3000K/4000K/5000K	2700K/3000K/4000K/5000K
光通量	Lumens	420lms	560lms	700lms
寿命	Life Time	50000 h	50000 h	50000 h
防护等级	IP Grade	IP54/IP65	IP54/IP65	IP54/IP65



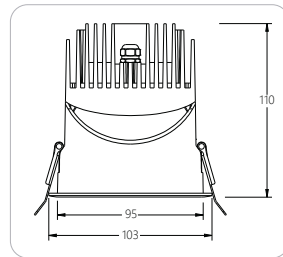
# IP65

Waterproof

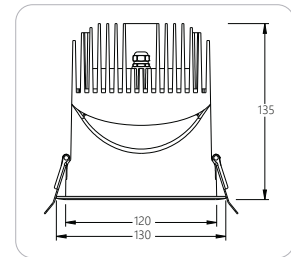
## Dimensions / 尺寸



12W



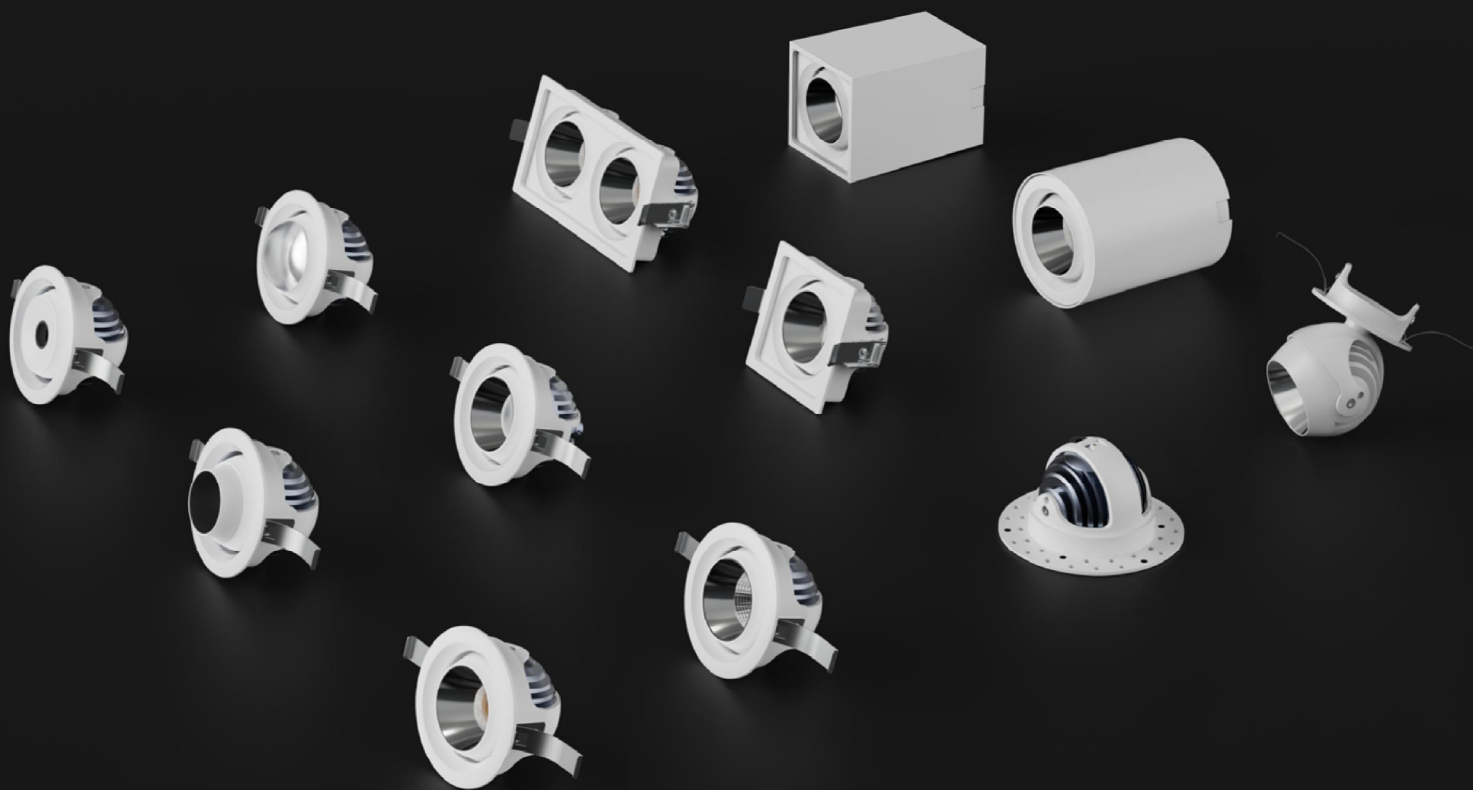
20W ( 25W )



30W ( 35W )



型号	Model Code	1005E75	1005E95	1005E120
功率	Power	12W	20W ( 25W )	30W ( 35W )
开孔	Cut Out	Ø75	Ø95	Ø120
光源	Light Source	CREE, Bridgelux	CREE, Bridgelux	CREE, Bridgelux
尺寸	Size(DxH)	Ø84x85	Ø103x110	Ø130x135
驱动	Driver	Lifud, Tridonic, IP65	Lifud, Tridonic, IP65	Lifud, Tridonic, IP65
眩光值	UGR	<6	<6	<6
显色指数	CRI	>90 97	>90 97	>90 97
光束角	Beam Angle	15°/24°/36°/55°	15°/24°/36°/55°	15°/24°/36°/55°
色温	CCT	2700K/3000K/4000K/5000K	2700K/3000K/4000K/5000K/6000K	2700K/3000K/4000K/5000K/6000K
光通量	Lumens	840lms	1700lms	2900lms
寿命	Life Time	50000 h	50000h	50000h
防护等级	IP Grade	IP54 / IP65	IP54 / IP65	IP54 / IP65

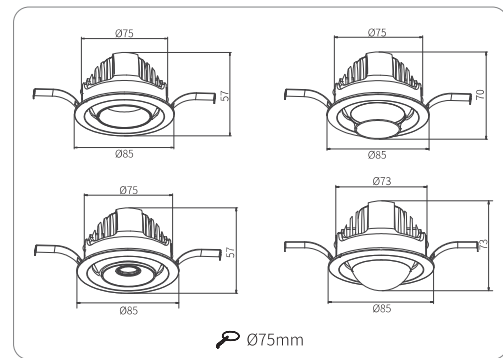


## New Gimbal Downlights Design

---

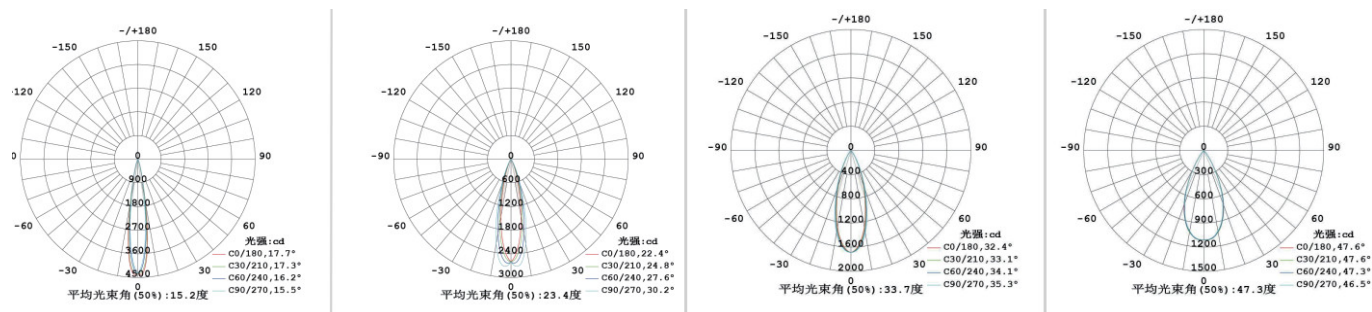
Continuously improve the integrated product system, provide more comprehensive scene lighting applications, create multiple expressions of light, and inject new possibilities into life

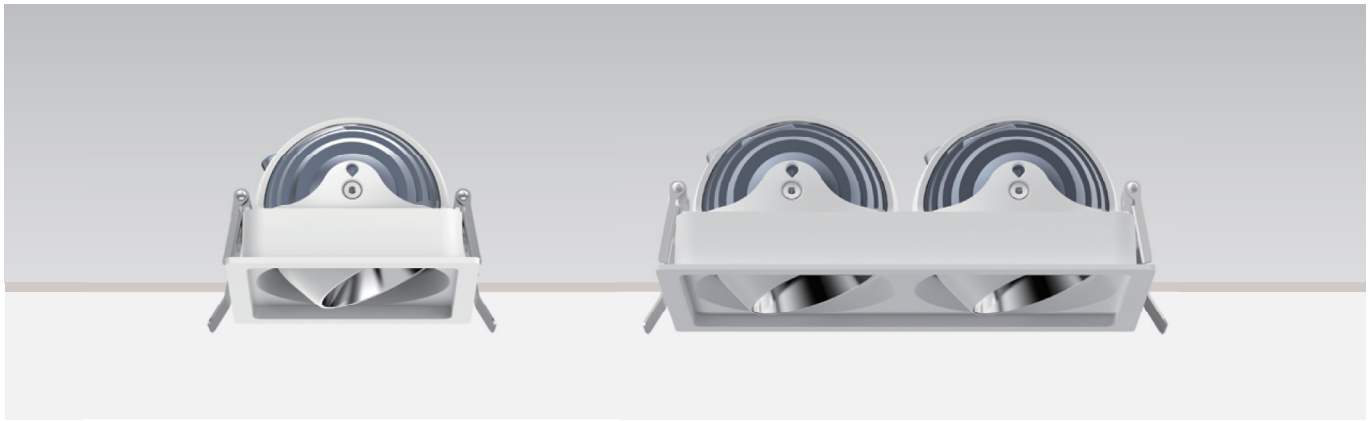
12W



型号	Model Code	100101E75	100102E75	100103E75	100104E75
功率	Power	10W	10W	10W	10W
开孔	Cut out	Φ 75mm	Φ 75mm	Φ 75mm	Φ 75mm
光源	Light Source	CREE / Bridgelux	CREE / Bridgelux	Bridgelux	CREE / Bridgelux
尺寸	Size(DxH)	Φ 85x57mm	Φ 85x57mm	Φ 85x57mm	Φ 85x57mm
驱动	Driver	Lifud, Philips, Tridonic	Lifud, Philips, Tridonic	Lifud, Philips, Tridonic	Lifud, Philips, Tridonic
眩光值	UGR	<16	<13	<8	<19
显色指数	CRI	>90, 97	>90, 97	>90, 97	>90, 97
光束角	Beam angle	15° / 24° / 36° / 50°	15° / 24° / 36° / 50°	24° / 36°	120°
色温	CCT	2700K/3000K/4000K/5000K/6500K	2700K/3000K/4000K/5000K/6500K	2700K/3000K/4000K/5000K/6500K	2700K/3000K/4000K/5000K/6500K
光通量	Lumens	840lms	700lms	500lms	780lms
寿命	Life time	50000 h	50000 h	50000 h	50000 h
防护等级	IP	IP20	IP20	IP20	IP20

配光参数 Photometric



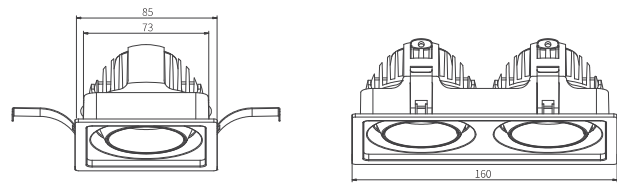


Colour:      

Sand gold Pearl Black Black White Silver Chrome

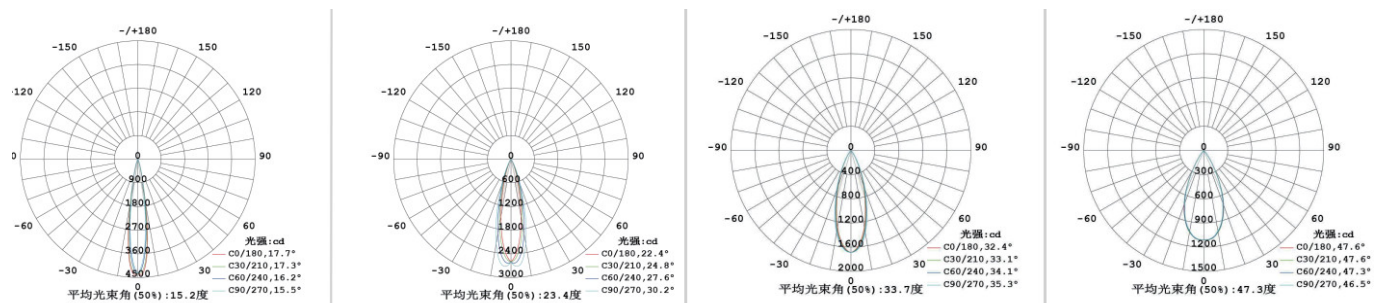
Optional: 

Honey comb



型号	Model Code	100101E75S1	100102E75S2
功率	Power	12W	2 x 12W
开孔	Cut out	85x85mm	160x85mm
光源	Light Source	CREE, Bridgelux	CREE, Bridgelux
尺寸	Size(DxH)	Φ86x86x76mm	Φ160x86x76mm
驱动	Driver	Lifud, Philips, Tridonic	Lifud, Philips, Tridonic
眩光值	UGR	<16	<16
显色指数	CRI	>90, 97	>90, 97
光束角	Beam angle	15° / 24° / 36° / 55°	15° / 24° / 36° / 55°
色温	CCT	2700K/3000K/4000K/5000K/6500K	2700K/3000K/4000K/5000K/6500K
光通量	Lumens	840lms	1680lms
寿命	Life time	50000 h	50000 h
防护等级	IP	IP20	IP20

## 配光参数 Photometric

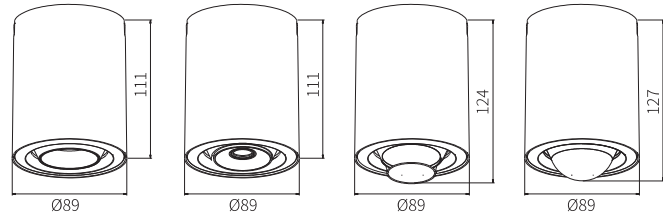




Colour:



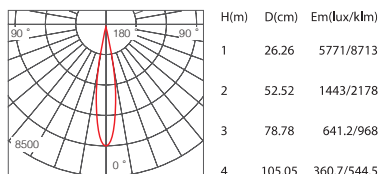
Optional:



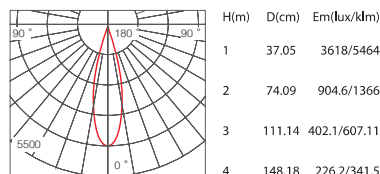
型号	Model Code	100101E75R	100102E75R	100103E75R	100104E75R
功率	Power	12W	12W	10W	12W
光源	Light Source	CREE, Bridgelux	CREE, Bridgelux	Bridgelux	CREE, Bridgelux
驱动	LED Driver	Lifud, Philips, Tridonic	Lifud, Philips, Tridonic	Lifud, Philips, Tridonic	Lifud, Philips, Tridonic
眩光值	UGR	<16	<13	<8	<19
显色指数	CRI	>90, 97	>90, 97	>90, 97	>90, 97
光束角	Beam angle	15 ° /24 ° /36 ° /50 °	15 ° /24 ° /36 ° /50 °	24 ° /36 °	120 °
色温	CCT	2700K/3000K/4000K/5000K/6500K	2700K/3000K/4000K/5000K/6500K	2700K/3000K/4000K/5000K/6500K	2700K/3000K/4000K/5000K/6500K
光通量	Lumens	840lms	700lms	500lms	780lms
寿命	Life time	50000h	50000h	50000h	50000h
防护等级	IP Grade	IP20	IP20	IP20	IP20

### 配光参数 Photometric

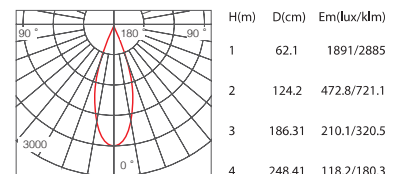
Beam Angle 15 ° 20W 3000K



Beam Angle 24 ° 20W 3000K



Beam Angle 38 ° 20W 3000K

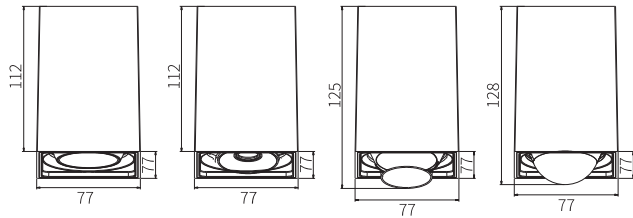




Colour:



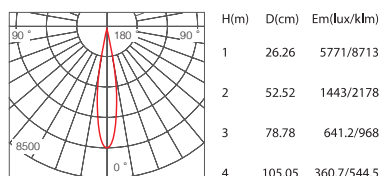
Optional:



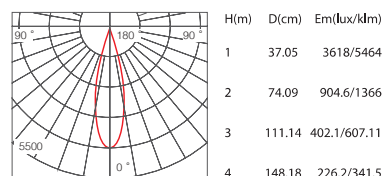
型号	Model Code	100101E75S	100102E75S	100103E75S	100104E75S
功率	Power	12W	12W	10W	12W
光源	Light Source	CREE, Bridgelux	CREE, Bridgelux	CREE, Bridgelux	CREE, Bridgelux
驱动	LED Driver	Lifud, Philips, Tridonic	Lifud, Philips, Tridonic	Lifud, Philips, Tridonic	Lifud, Philips, Tridonic
眩光值	UGR	<16	<13	<8	<19
显色指数	CRI	>90, 97	>90, 97	>90, 97	>90, 97
光束角	Beam angle	15 ° /24 ° /36 ° /50 °	15 ° /24 ° /36 ° /50 °	24 ° /36 °	120 °
色温	CCT	2700K/3000K/4000K/5000K/6500K	2700K/3000K/4000K/5000K/6500K	2700K/3000K/4000K/5000K/6500K	2700K/3000K/4000K/5000K/6500K
光通量	Lumens	840lms	700lms	500lms	780lms
寿命	Life time	50000h	50000h	50000h	50000h
防护等级	IP Grade	IP20	IP20	IP20	IP20

### 配光参数 Photometric

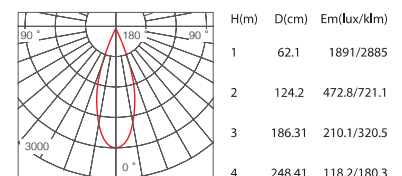
Beam Angle 15 ° 20W 3000K



Beam Angle 24 ° 20W 3000K

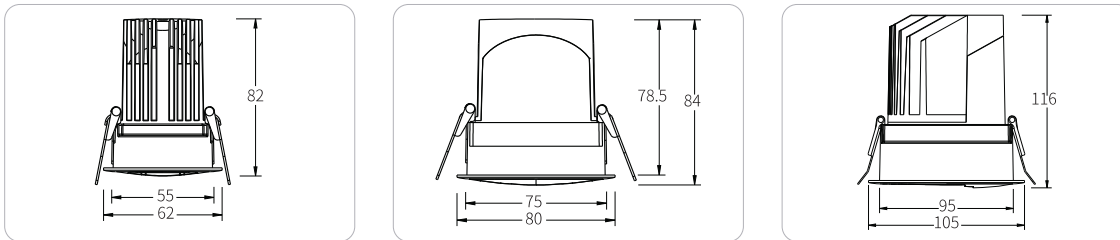


Beam Angle 38 ° 20W 3000K





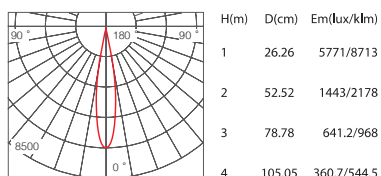
Dimensions / 尺寸



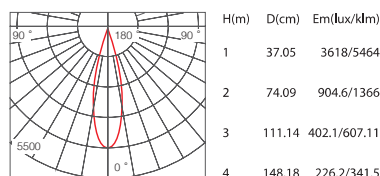
型号	Model Code	1016E55	1016E75	1005E120
功率	Power	7W	12W	25W
开孔	Cut Out	Ø55	Ø75	Ø95
光源	Light Source	CREE, Bridgelux, Citizen	CREE, Bridgelux, Citizen	CREE, Bridgelux, Citizen
尺寸	Size(DxH)	Ø62x82	Ø80x84	Ø105x115
驱动	Driver	Lifud, Tridonic	Lifud, Tridonic, IP65	Lifud, Tridonic, IP65
显色指数	CRI	>90 97	>90 97	>90 97
色温	CCT	2700K/3000K/4000K/5000K/6000K	2700K/3000K/4000K/5000K/6000K	2700K/3000K/4000K/5000K/6000K
光通量	Lumens	560lms	960lms	2000lms
寿命	Life Time	50000 h	50000h	50000h
防护等级	IP Grade	IP40	IP40	IP40

配光参数 Photometric

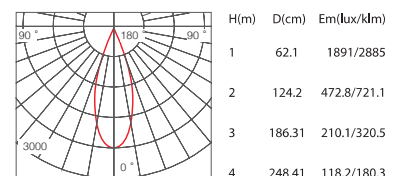
Beam Angle 15 ° 20W 3000K



Beam Angle 24 ° 20W 3000K



Beam Angle 38 ° 20W 3000K





# Led Retrofit Module Downlight

可替换式模组光源





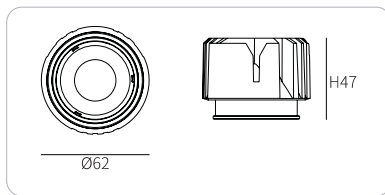
MR16102



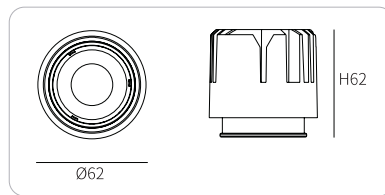
MR16151

WHITE       BLACK

### Dimensions / 尺寸



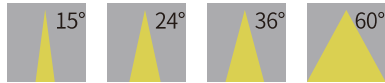
10W



12W-15W



### Beam Angle / 发光角度



### Color Temperature / 色温

2700K, 3000K, 3500K, 4000K, 5000K, 6500K, CCT

### LED / 光源

CREE Ra > 90, 97

### LED Driver / 驱动

Lifud, Philip, Tridonic

### Life Span / 寿命

50000Hours

### Specification / 规格参数

Model	Input	Power	Luminous Flux
MR16102	120V/220V	10W	900lms
MR16151	120V/220V	12W/15W	1000-1300lms

Recessed



100301Y



100302Y



100303Y



100304Y

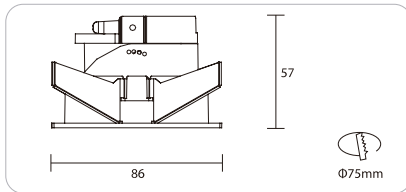


WHITE



BLACK

Dimensions / 尺寸



Secondary reflector / 二次光学



电镀银  
Chrome



电镀珍珠黑  
Pearl Black



砂银  
Sand Silver



哑白  
Matt White



哑黑  
Matt Black



砂金  
Sand Golden

Trimless



100301T



100303T



100304T

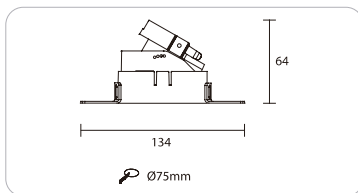


WHITE



BLACK

Dimensions / 尺寸



Secondary reflector / 二次光学



电镀银  
Chrome



电镀珍珠黑  
Pearl Black



砂银  
Sand Silver



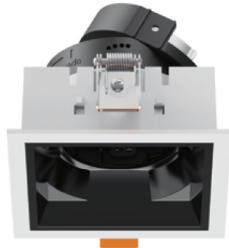
哑白  
Matt White



哑黑  
Matt Black



砂金  
Sand Golden



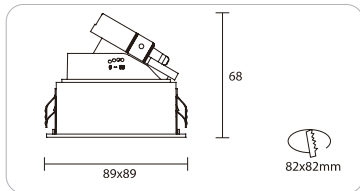
100401Y



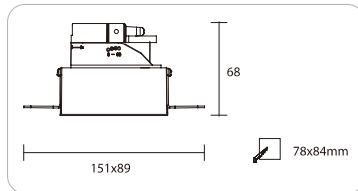
100401T

WHITE  BLACK

Dimensions / 尺寸

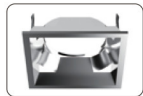


Recessed

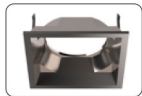


Trimless

Secondary reflector / 二次光学



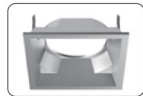
镀铬  
Chrome Plated



黑金  
Black Gold



砂金  
Sand Gold



砂银  
Sand Silver



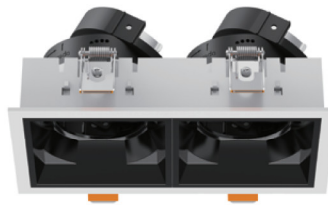
哑白  
Matt White



哑黑  
Matt Black



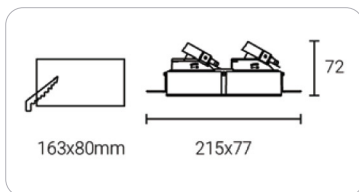
100401T2



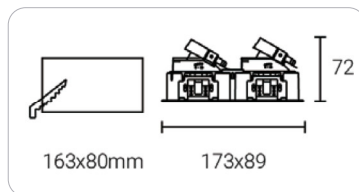
100401Y2

WHITE  BLACK

Dimensions / 尺寸

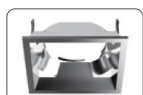


Trimless

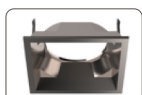


Recessed

Secondary reflector / 二次光学



镀铬  
Chrome Plated



黑金  
Black Gold



砂金  
Sand Gold



砂银  
Sand Silver



哑白  
Matt White



哑黑  
Matt Black

Fixed

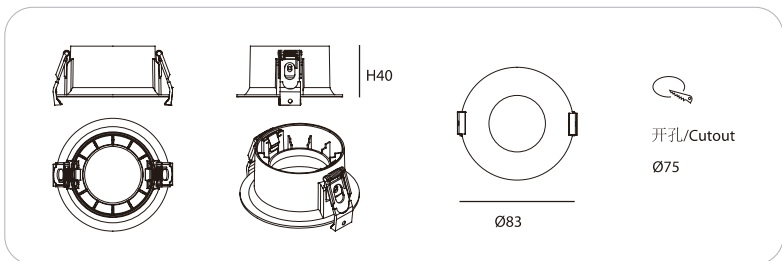
MR16-FX-75-ARC



☐ WHITE

■ BLACK

Dimensions / 尺寸



Fixed

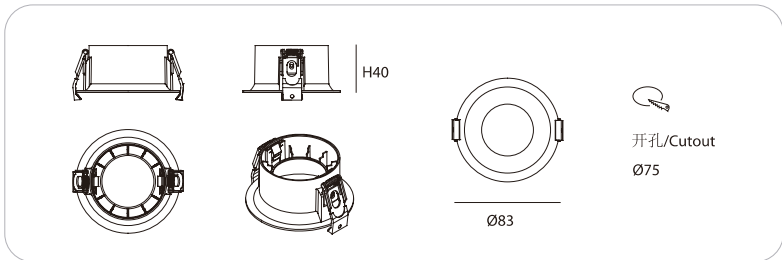
MR16-FX-75-SL



☐ WHITE

■ BLACK

Dimensions / 尺寸

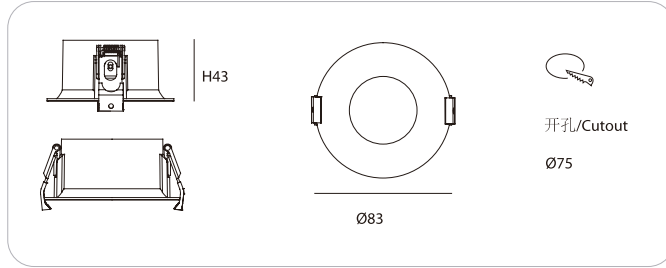


Adjustable  
MR16-AJ75-R



☐ WHITE    ■ BLACK

Dimensions / 尺寸

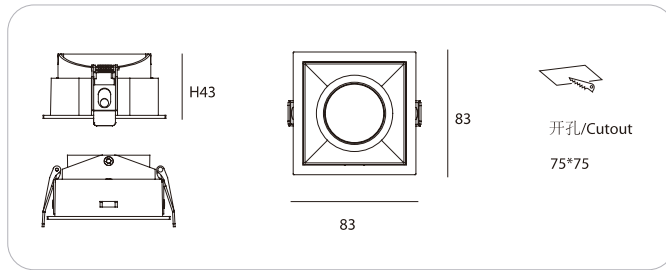


Adjustable  
MR16-AJ75-S



☐ WHITE    ■ BLACK

Dimensions / 尺寸

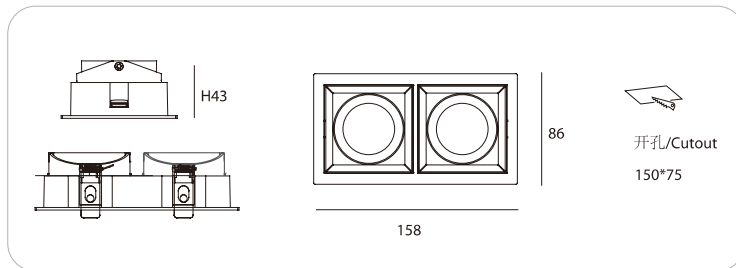


Adjustable  
MR16-AJ75-S2X



☐ WHITE    ■ BLACK

Dimensions / 尺寸

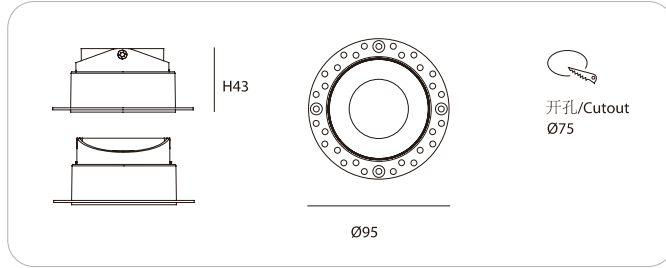


Trimless  
MR16-AJ75-RT



☐ WHITE    ■ BLACK

Dimensions / 尺寸

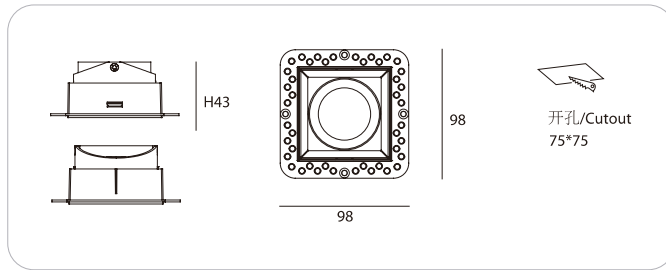


Trimless  
MR16-AJ75-ST



☐ WHITE    ■ BLACK

Dimensions / 尺寸

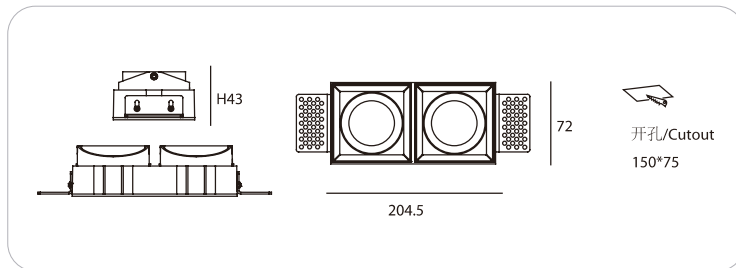


Trimless  
MR16-AJ75-ST2X



☐ WHITE    ■ BLACK

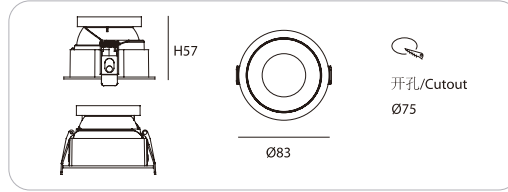
Dimensions / 尺寸



Adjustable  
MR16-HR75-R



Dimensions / 尺寸



☐ WHITE      ■ BLACK

Secondary reflector / 二次光学



砂黑  
Matte Black



砂白  
Matte White



砂银  
Misty Silver



枪黑  
Gun Black



亮银  
Bright Silver

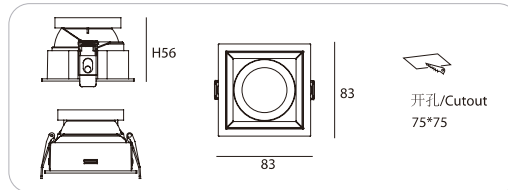


香槟金  
Gold

Adjustable  
MR16-HR75-S



Dimensions / 尺寸



☐ WHITE      ■ BLACK

Secondary reflector / 二次光学



砂黑  
Matte Black



砂白  
Matte White



砂银  
Misty Silver



枪黑  
Gun Black

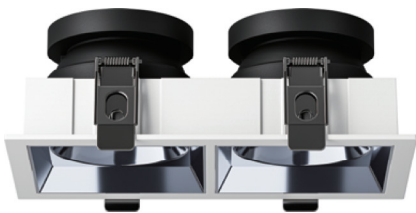


亮银  
Bright Silver

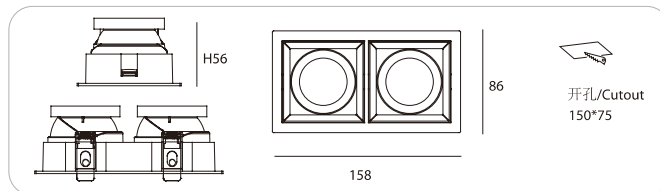


香槟金  
Gold

Adjustable  
MR16-HR75-S2X



Dimensions / 尺寸



☐ WHITE      ■ BLACK

Secondary reflector / 二次光学



砂黑  
Matte Black



砂白  
Matte White



砂银  
Misty Silver



枪黑  
Gun Black



亮银  
Bright Silver



香槟金  
Gold

Trimless  
MR16-HR75-RT



☐ WHITE      ■ BLACK

Secondary reflector / 二次光学



砂黑  
Matte Black



砂白  
Matte White



砂银  
Misty Silver



枪黑  
Gun Black

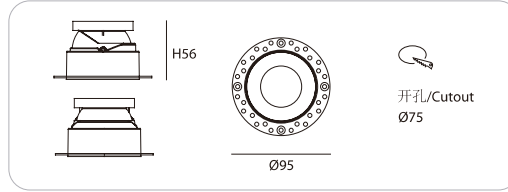


亮银  
Bright Silver



香槟金  
Gold

Dimensions / 尺寸



Trimless  
MR16-HR75-ST



☐ WHITE      ■ BLACK

Secondary reflector / 二次光学



砂黑  
Matte Black



砂白  
Matte White



砂银  
Misty Silver



枪黑  
Gun Black

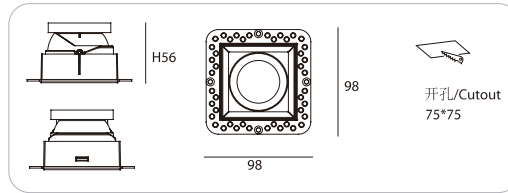


亮银  
Bright Silver



香槟金  
Gold

Dimensions / 尺寸



Trimless  
MR16-HR75-ST2X



☐ WHITE      ■ BLACK

Secondary reflector / 二次光学



砂黑  
Matte Black



砂白  
Matte White



砂银  
Misty Silver



枪黑  
Gun Black

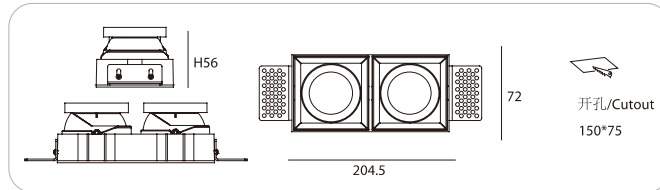


亮银  
Bright Silver



香槟金  
Gold

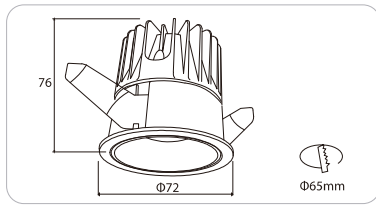
Dimensions / 尺寸



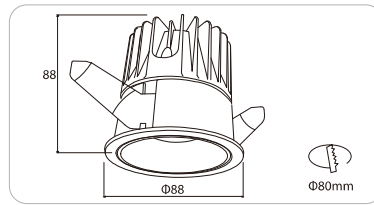


□ WHITE    ■ BLACK

Dimensions / 尺寸



9W



15W



Secondary reflector / 二次光学



哑白  
Matt White



电镀银  
Chrome



哑黑  
Matt Black



砂银  
Sand Silver



砂金  
Sand Golden

Beam Angle / 发光角度



Color Temperature / 色温

2700K, 3000K, 4000K, 5000K, 6000K

LED / 光源

CREE Ra > 90, 97

LED Driver / 驱动

Lifud, Philip, Tridonic

Life Span / 寿命

50000Hours

Specification / 规格参数

Model	Input	Power	Luminous Flux
WF-1001A	120V/220V	9W	720lms
WF-1501A	120V/220V	15W	1200lms



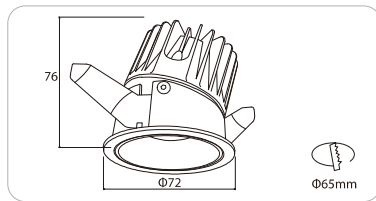
A



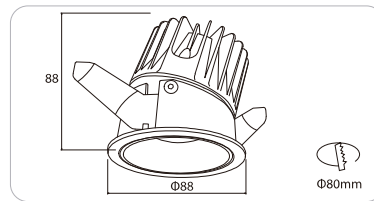
B

□ WHITE    ■ BLACK

### Dimensions / 尺寸



9W



15W



### Secondary reflector / 二次光学



哑白  
Matt White



电镀银  
Chrome



哑黑  
Matt Black



砂银  
Sand Silver



砂金  
Sand Golden

### Beam Angle / 发光角度



### Color Temperature / 色温

2700K, 3000K, 4000K, 5000K, 6000K

### LED / 光源

CREE    Ra > 90, 97

### LED Driver / 驱动

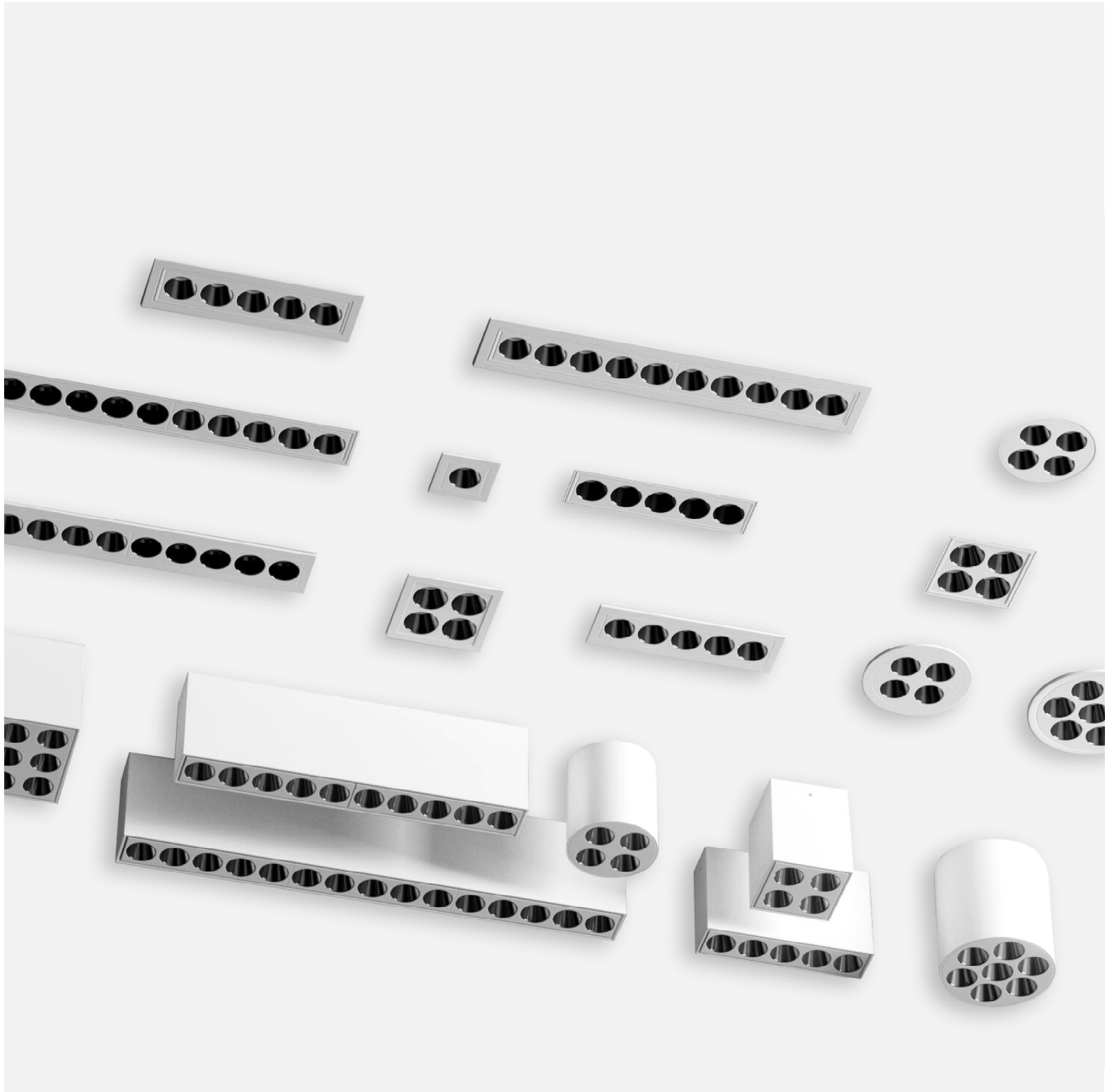
Lifud, Philip, Tridonic

### Life Span / 寿命

50000Hours

### Specification / 规格参数

Model	Input	Power	Luminous Flux
WA-1001B	120V/220V	9W	720lms
WA-1501B	120V/220V	15W	1200lms



## Magic Grill Led Downlight

---

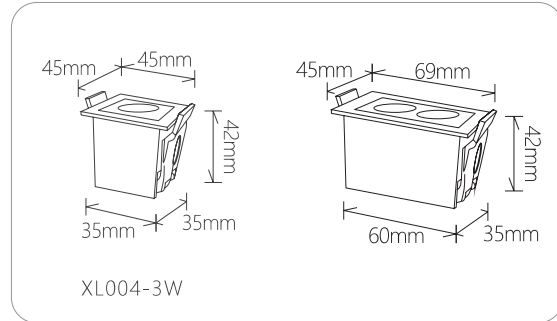


**XL004-1T**



**XL004-2T**

Dimensions / 尺寸



XL004-3W

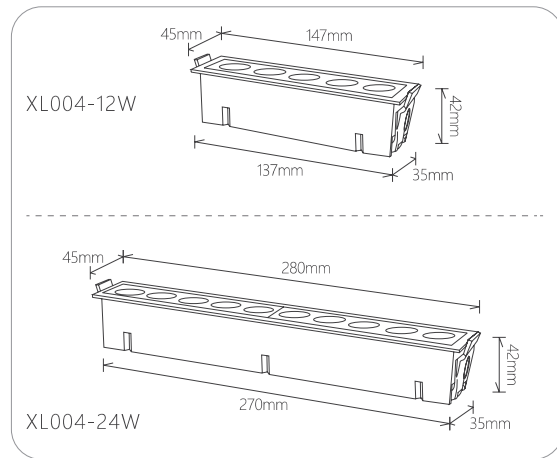


**XL004-5T**



**XL004-10T**

Dimensions / 尺寸



XL004-12W

XL004-24W

Beam Angle / 发光角度



Color Temperature / 色温

2700K, 3000K, 4000K, 6000K

LED / 光源

Osram, Bridgelux Ra>90

LED Driver / 驱动

Eaglerise, KGP

Life Span / 寿命

50000Hours

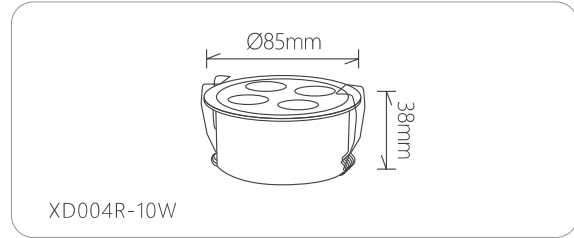
Specification / 规格参数

Model	Input	Power	Luminous Flux
XL004-1T	220V-240VAC	3W	240lms
XL004-2T	220V-240VAC	6W	480lms
XL004-5T	220V-240VAC	12W	960lms
XL004-10T	220V-240VAC	24W	1680lms



**XL004R-4T**

Dimensions / 尺寸

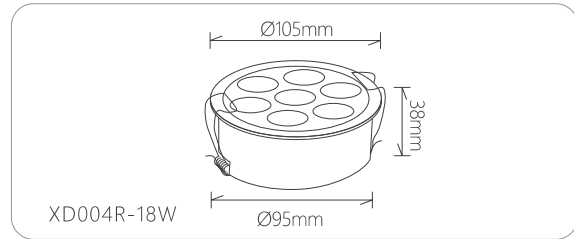


XD004R-10W



**XL004R-7T**

Dimensions / 尺寸

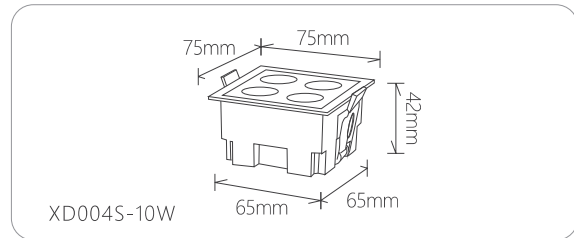


XD004R-18W



**XL004S-4T**

Dimensions / 尺寸



XD004S-10W

Beam Angle / 发光角度



Color Temperature / 色温

2700K, 3000K, 4000K, 6000K

LED / 光源

Osram, Bridgelux Ra>90

LED Driver / 驱动

Eaglerise, KGP

Life Span / 寿命

50000Hours

Specification / 规格参数

Model	Input	Power	Luminous Flux
XL004R-4T	220V-240VAC	10W	800lms
XL004S-4T	220V-240VAC	10W	800lms
XL004R-7T	220V-240VAC	16W	1280lms

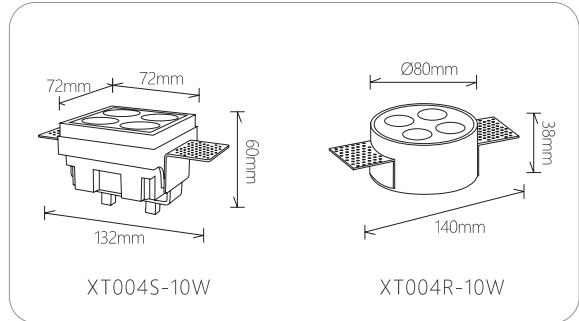


**XT004R-4T**



**XT004S-4T**

Dimensions / 尺寸

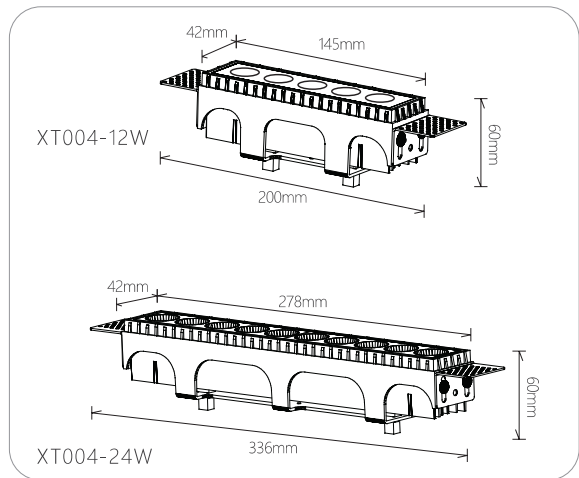


**XL004-2T**

**XL004-5T**

**XL004-10T**

Dimensions / 尺寸



Beam Angle / 发光角度



Color Temperature / 色温

2700K, 3000K, 4000K, 6000K

LED / 光源

Osram, Bridgelux Ra>90

LED Driver / 驱动

Eaglerise, KGP

Life Span / 寿命

50000Hours

Specification / 规格参数

Model	Input	Power	Luminous Flux	Cutout Hole (mm)
XT004-2T	220V-240VAC	6W	420lms	63x37
XT004R-4T	220V-240VAC	10W	700lms	∅80
XT004S-4T	220V-240VAC	10W	700lms	72x72
XT004-5T	220V-240VAC	12W	840lms	145x42
XT004-10T	220V-240VAC	24W	1680lms	278x42

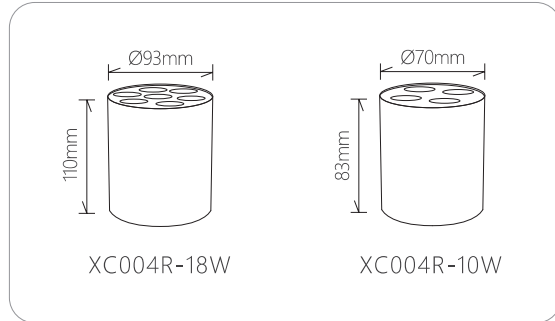
Dimensions / 尺寸



**XC004R-4T**



**XC004R-7T**



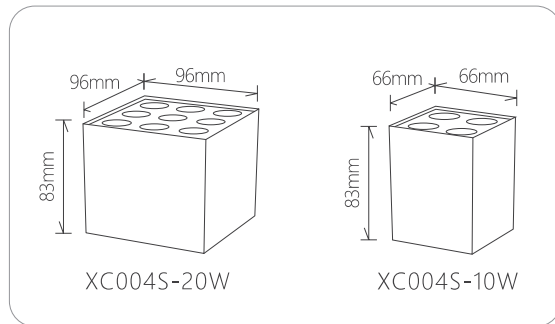
Dimensions / 尺寸



**XC004S-4T**



**XC004S-9T**



Beam Angle / 发光角度



Color Temperature / 色温

2700K, 3000K, 4000K, 6000K

LED / 光源

Osram, Bridgelux Ra>90

LED Driver / 驱动

Eaglerise, KGP

Life Span / 寿命

50000Hours

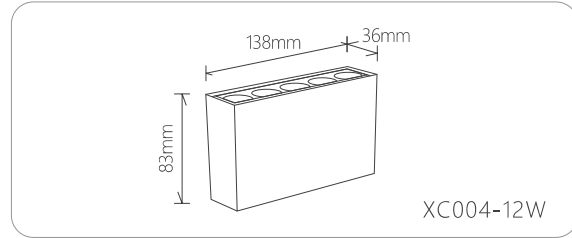
Specification / 规格参数

Model	Input	Power	Luminous Flux
XC004R-4T	220V-240VAC	10W	700lms
XC004R-7T	220V-240VAC	16W	1120lms
XC004S-4T	220V-240VAC	10W	700lms
XC004S-9T	220V-240VAC	20W	1400lms

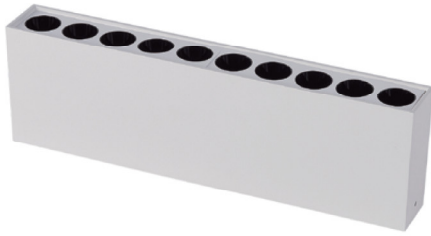


**XC004-5T**

Dimensions / 尺寸

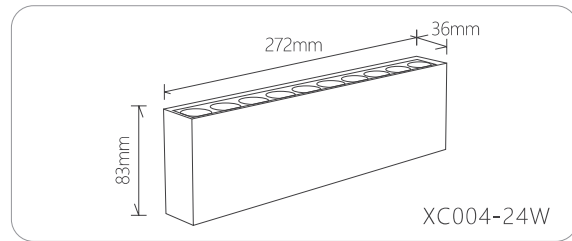


XC004-12W

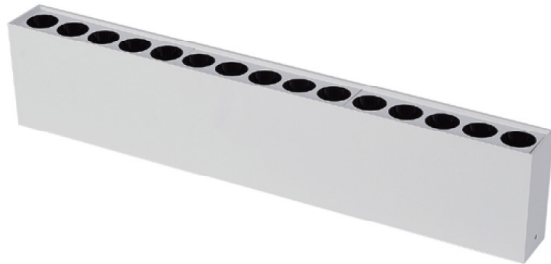


**XC004-10T**

Dimensions / 尺寸

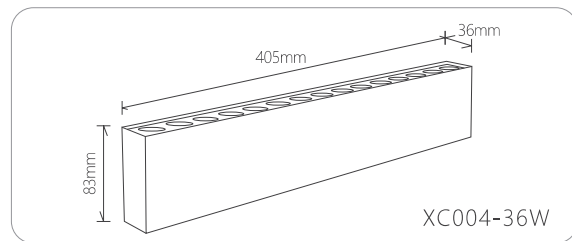


XC004-24W



**XC004-15T**

Dimensions / 尺寸



XC004-36W

Beam Angle / 发光角度



Color Temperature / 色温

2700K, 3000K, 4000K, 6000K

LED / 光源

Osram, Bridgelux Ra>90

LED Driver / 驱动

Eaglerise, KGP

Life Span / 寿命

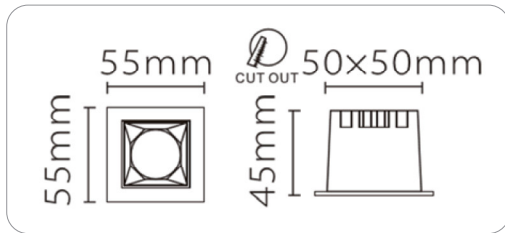
50000Hours

Specification / 规格参数

Model	Input	Power	Luminous Flux
XC004-5T	220V-240VAC	12W	840lms
XC004-10T	220V-240VAC	24W	1680lms
XC004-15T	220V-240VAC	36W	2500lms

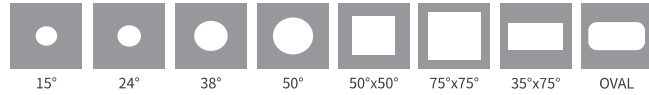


Dimensions / 尺寸



PRODUCT PARAMETERS

Beam Angle / 发光角度



Color Temperature / 色温

2700K, 3000K, 4000K, 5000K, 6000K

LED / 光源

CREE Ra > 80, 90

LED Driver / 驱动

Lifud

Life Span / 寿命

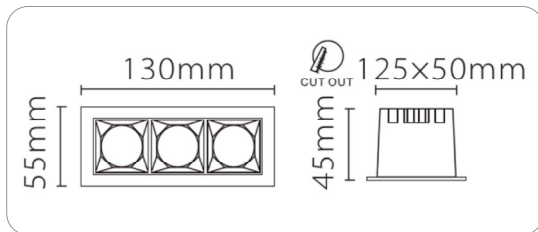
50000Hours

Specification / 规格参数

Model	Input	Power	Luminous Flux
XL003-1T	220V-240VAC	5W	350lm



Dimensions / 尺寸



PRODUCT PARAMETERS

Beam Angle / 发光角度



Color Temperature / 色温

2700K, 3000K, 4000K, 5000K, 6000K

LED / 光源

CREE Ra > 80, 90

LED Driver / 驱动

Lifud

Life Span / 寿命

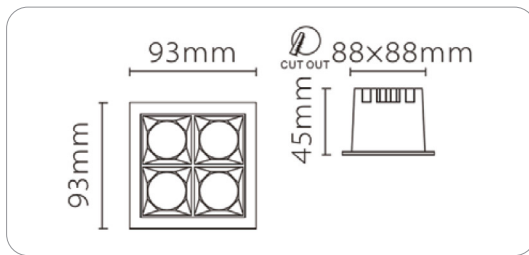
50000Hours

Specification / 规格参数

Model	Input	Power	Luminous Flux
XL003-3T	220V-240VAC	12W	840lm



Dimensions / 尺寸



PRODUCT PARAMETERS

Beam Angle / 发光角度



Color Temperature / 色温

2700K, 3000K, 4000K, 5000K, 6000K

LED / 光源

CREE Ra > 80, 90

LED Driver / 驱动

Lifud

Life Span / 寿命

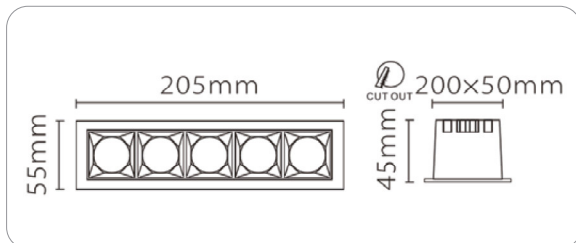
50000Hours

Specification / 规格参数

Model	Input	Power	Luminous Flux
XL003-4T	220V-240VAC	16W	1100lms



Dimensions / 尺寸



PRODUCT PARAMETERS

Beam Angle / 发光角度



Color Temperature / 色温

2700K, 3000K, 4000K, 5000K, 6000K

LED / 光源

CREE Ra > 80, 90

LED Driver / 驱动

Lifud

Life Span / 寿命

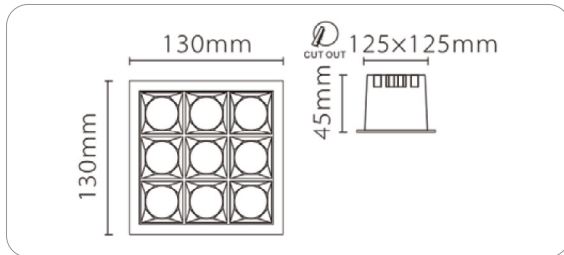
50000Hours

Specification / 规格参数

Model	Input	Power	Luminous Flux
XL003-5T	220V-240VAC	20W	1400lms



Dimensions / 尺寸



PRODUCT PARAMETERS

Beam Angle / 发光角度



Color Temperature / 色温

2700K, 3000K, 4000K, 5000K, 6000K

LED / 光源

CREE Ra > 80, 90

LED Driver / 驱动

Lifud

Life Span / 寿命

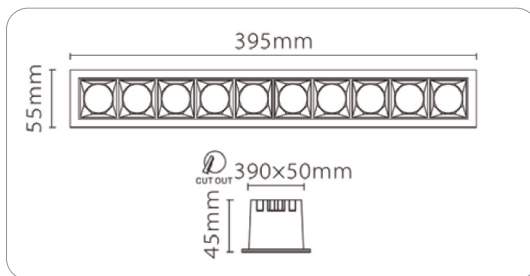
50000Hours

Specification / 规格参数

Model	Input	Power	Luminous Flux
XL003-9T	220V-240VAC	36W	2500lm



Dimensions / 尺寸



PRODUCT PARAMETERS

Beam Angle / 发光角度



Color Temperature / 色温

2700K, 3000K, 4000K, 5000K, 6000K

LED / 光源

CREE Ra > 80, 90

LED Driver / 驱动

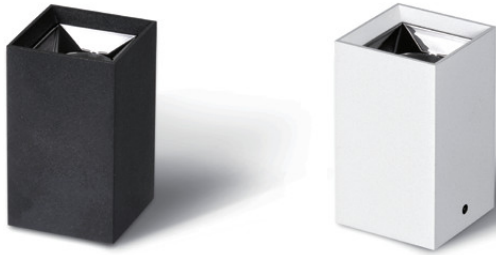
Lifud

Life Span / 寿命

50000Hours

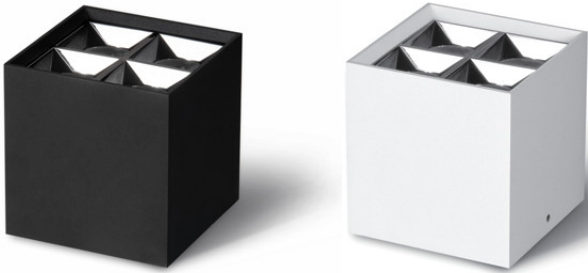
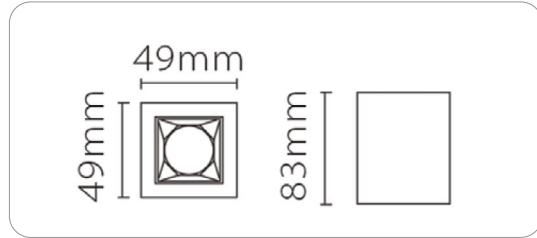
Specification / 规格参数

Model	Input	Power	Luminous Flux
XL003-10T	220V-240VAC	40W	2800lm



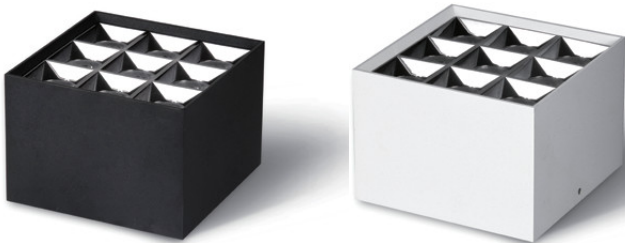
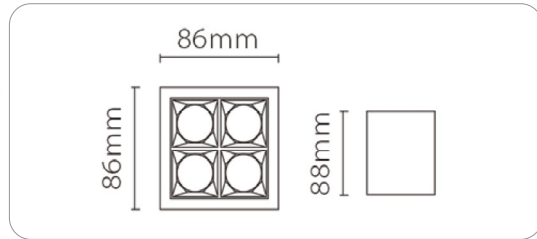
**XC002-1T**

Dimensions / 尺寸



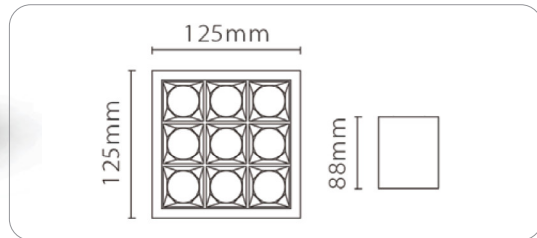
**XC002-4T**

Dimensions / 尺寸



**XC002-9T**

Dimensions / 尺寸



Beam Angle / 发光角度



Color Temperature / 色温

2700K, 3000K, 4000K, 5000K, 6000K

LED / 光源

CREE Ra > 80, 90

LED Driver / 驱动

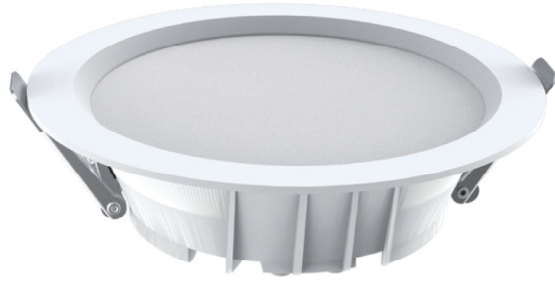
Lifud

Life Span / 寿命

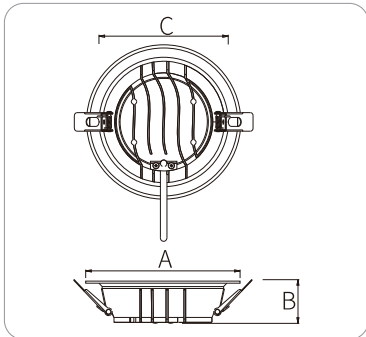
50000Hours

Specification / 规格参数

Model	Input	Power	Luminous Flux
XC002-1T	220V-240VAC	5W	350lms
XC002-4T	220V-240VAC	15W	1100lms
XC002-9T	220V-240VAC	30W	2100lms



Dimensions / 尺寸



PRODUCT PARAMETERS

Beam Angle / 发光角度



Color Temperature / 色温

3000K, 4000K, 6000K

LED / 光源

Epistar Ra>90

LED Driver / 驱动

DOB

Life Span / 寿命

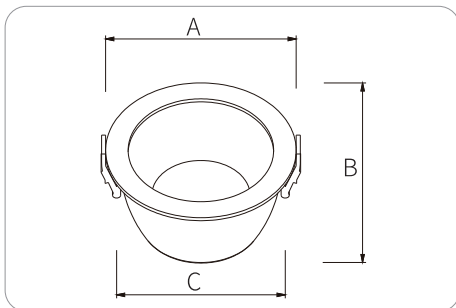
25000小时

Specification / 规格参数

Model	Input	Power	Luminous	A	B	C
CH-TPTD-2307	220V-240VAC	7W	385lms	Φ90	38	Φ75
CH-TPTD-2312	220V-240VAC	12W	840lms	Φ120	38	Φ105
CH-TPTD-2316	220V-240VAC	16W	1120lms	Φ140	38	Φ120
CH-TPTD-2324	220V-240VAC	24W	1920lms	Φ180	41	Φ150



Dimensions / 尺寸



PRODUCT PARAMETERS

Beam Angle / 发光角度



Color Temperature / 色温

2700K, 3000K, 4000K, 6000K

LED / 光源

Osram, SMD Ra > 80, 90

LED Driver / 驱动

Lifud

Life Span / 寿命

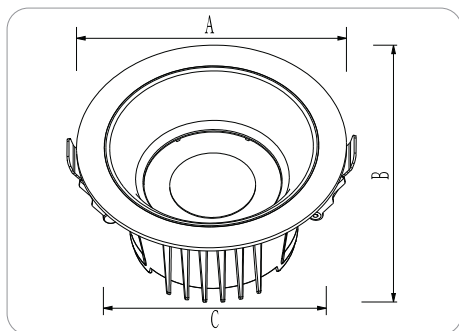
50000Hours

Specification / 规格参数

Model	Input	Power	Luminous	A	B	C
CH-FX-2	120V/220V	7W	500lms	Φ90	45	Φ70
CH-FX-3	120V/220V	10W	800lms	Φ105	65	Φ85
CH-FX-4	120V/220V	15W	1200lms	Φ130	68	Φ105
CH-FX-5	120V/220V	20W	1600lms	Φ165	90	Φ140
CH-FX-6	120V/220V	30W	2400lms	Φ190	95	Φ165
CH-FX-8	120V/220V	40W	3200lms	Φ220	105	Φ200



## Dimensions / 尺寸



## PRODUCT PARAMETERS

## Beam Angle / 发光角度



## Color Temperature / 色温

3000K, 4000K, 6000K

## LED / 光源

Epistar SMD Ra&gt;80

## LED Driver / 驱动

DOB, Lifud Eaglerise

## Life Span / 寿命

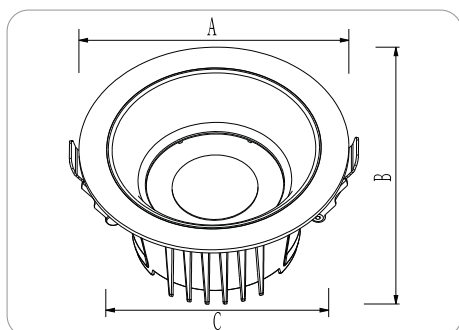
50000Hours

## Specification / 规格参数

Model	Input	Power	Luminous	A	B	C
CH-CG-2505A	220V	5W	400lms	Φ90	49	Φ75
CH-CG-3012A	220V	12W	960lms	Φ110	55	Φ95
CH-CG-4015A	220V	16W	1280lms	Φ130	62	Φ110
CH-CG-6024A	220V	24W	1920lms	Φ170	62	Φ145



## Dimensions / 尺寸



## PRODUCT PARAMETERS

## Beam Angle / 发光角度



## Color Temperature / 色温

2700K, 3000K, 4000K, 6000K

## LED / 光源

Epistar, Bridgelux, CREE, Citizen, COB Ra &gt; 80, 90

## LED Driver / 驱动

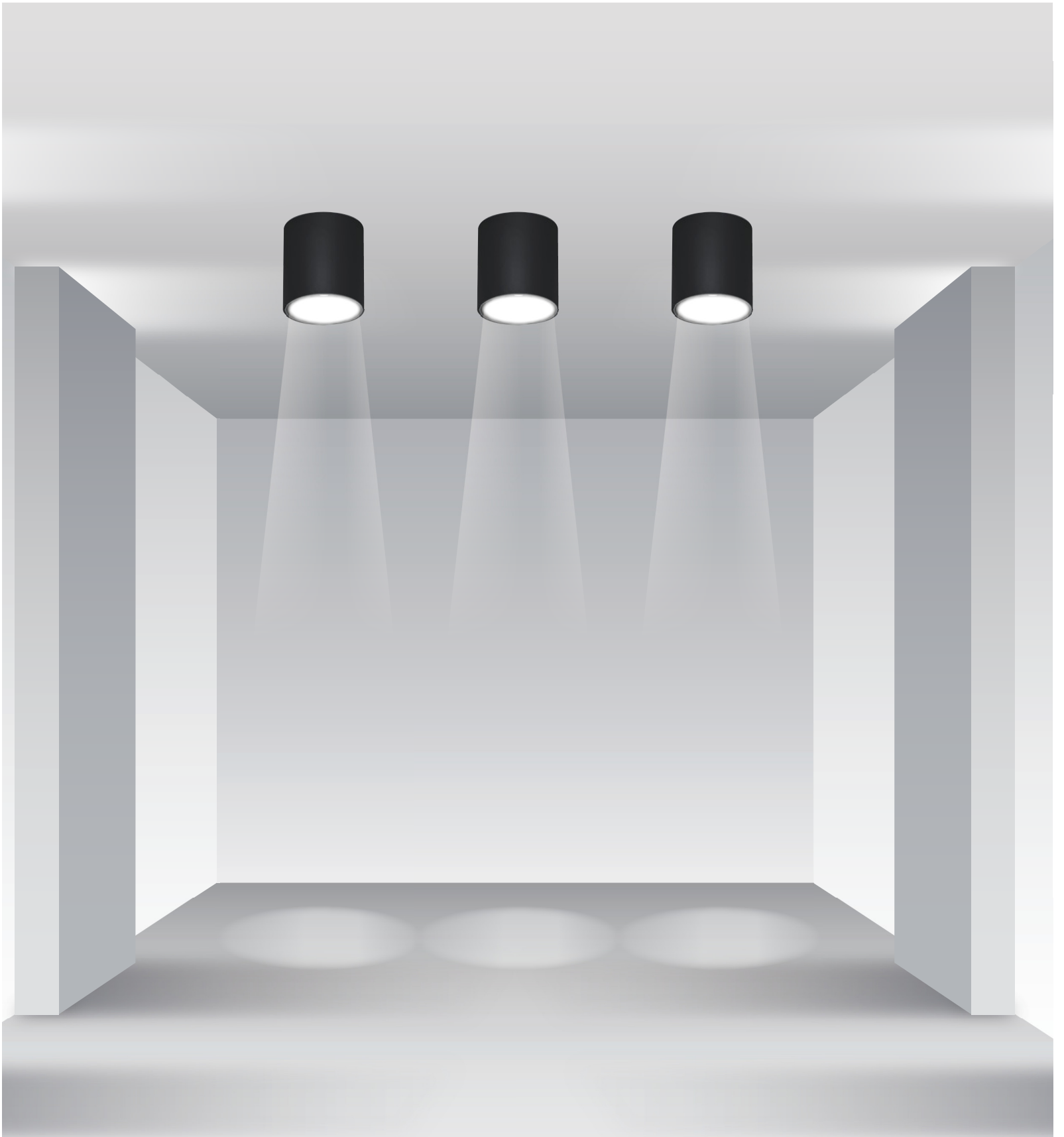
M-rainbow/Lifud

## Life Span / 寿命

50000Hours

## Specification / 规格参数

Model	Input	Power	Luminous	A	B	C
CH-CG-2505B	120V/220V	5W	400lms	Φ90	49	Φ75
CH-CG-3012B	120V/220V	12W	960lms	Φ110	55	Φ95
CH-CG-4015B	120V/220V	16W	1280lms	Φ130	62	Φ110

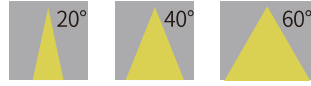


**Surface Mounted LED Downlight**



PRODUCT PARAMETERS

Beam Angle / 发光角度



Color Temperature / 色温

2700K, 3000K, 4000K, 6000K

LED / 光源

Epistar, CREE Ra > 80, 90

LED Driver / 驱动

Lifud

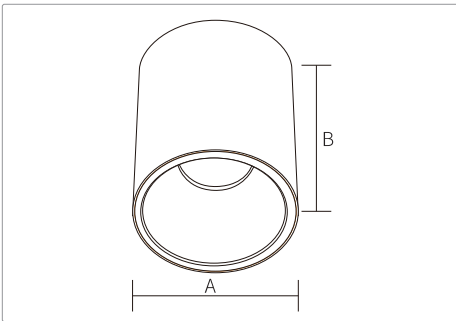
Life Span / 寿命

50000Hours

Specification / 规格参数

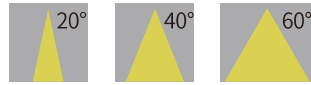
Model	Input	Power	Luminous	A	B
SD09-2	120V/220V	9W	810lms	Φ72	75
SD115-2	120V/220V	15W	1200lms	Φ90	90
SD120-2	120V/220V	20W	1800lms	Φ110	110
SD-125-2	120V/220V	30W	2700lms	Φ130	130
SD-135-2	120V/220V	40W	3600lms	Φ170	170
SD-145-2	120V/220V	50W	4500lms	Φ195	190

Dimensions / 尺寸



PRODUCT PARAMETERS

Beam Angle / 发光角度



Color Temperature / 色温

2700K, 3000K, 4000K, 6000K

LED / 光源

Epistar, CREE Ra > 80, 90

LED Driver / 驱动

Lifud

Life Span / 寿命

50000Hours

Specification / 规格参数

Model	Input	Power	Luminous	A	B	C
SD210-2	120V/220V	9W	810lms	72	72	75
SD220-2	120V/220V	20W	1800lms	90	90	90
SD230-2	120V/220V	30W	2700lms	110	110	110

Dimensions / 尺寸

